



Regain



OEKO-TEX®
CONFIDENCE IN TEXTILES



FABRAA^F
fabrics with a conscience

Witteveen
Project-Inrichting.nl



Regain

This luxurious 100% RPET woven upholstery textile is in our www.wovenbottles.com collection. Regain is piece dyed and fits all types of upholstery.

Woven on an air jet loom with micro-chenille yarns, these yarns provide a voluminous, chunky and comfortable handfeel.

The non-woven backing is made from 100% RPET, which makes Regain a 100% sustainable product. We would also like to mention that Regain is strong, durable and all certifications are available. Regain has been developed in collaboration with Waste2Wear, experts in polyester textiles made from recycled plastic bottles. Also know for their RA3 and Blockchain technology to ensure full transparency.

Machine-washable at 30 degrees Celsius* and available from stock in a wide and trendy colour line.

- We recommend to wash the cover inside out and immediately place the cover back to the piece of furniture, slightly damp, after washing.

Fabraa Upholstery fabrics with a conscience. We make sustainable choices easy by offering a wide range of high-quality, affordable upholstery fabrics with consideration for the conditions throughout the supply chain.

Composition

/ faceside 100%RPET
/ backside 100%RPET
/ chenille flatweave

Suitable for

sofa's, beds, chairs with fitted and loose fitting upholstery



anthracite 67



blush 92



cream 02



darkbrown 18



darkgrey 68



eucalyptus 193



hazel 96



honey 202



hunter 156



indigo 90



lightgrey 60



liver 10

Please note: colours may vary according to your screen settings.



natural 01



niagara 158



ocre 23



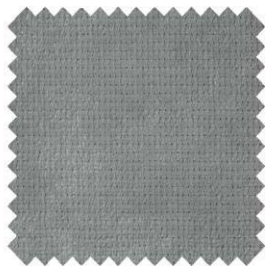
plumb 168



scarlet 141



taupe 12



zinc 167

Please note: colours may vary according to your screen settings.

Regain - Article passport


A micro chenille sustainable quality with a soft handfeel and a matt and rich look.

Available from stock in a wide range of contemporary and commercial colours.

Product characteristics

Productgroup	chenille flatweave	
Applications	sofa's, beds, chairs with fitted and loose fitting upholstery	
Composition faceside	100%RPET	
Composition backside	100%RPET	
Bonding	non-woven	
Statistic code	58013300	
Dyeing method	piece dyed	
Available colours	19	
Packaging	transparent plastic	






Durability specifications

Test	Test specification	Executed by laboratory:	Unit	Testresult		Norm RAL GZ 430/4:2019-01		Norm DIN EN 14 465:2006-09
				Dry	Wet	DGM	DGM+	
Abrasion resistance - yarn breakage	DIN EN ISO 12947-1:2007-04, DIN EN ISO 12947-2:2017-03	CTL	cycles	>100.000		min. 8.000	min. 16.000	B
Pilling	DIN EN ISO 12945-2:2000-11. 2000 cycles	CTL	grade	4-5		min. 3-4	min. 4	A
Colour fastness to light	DIN EN ISO 105-B02:2014-11. Process 3, exposure level 5							
	light colours	CTL	grade	4		min. 4	min.5	C
	middle colours	CTL	grade	4		min. 4	min.5	C
	dark colours	CTL	grade	4		min. 4	min.5	C
Colour fastness to rubbing	DIN EN ISO 105-X12:2016-11							
	light colours	CTL	grade	5	5	dry: 4, wet: 3	dry: > 4, wet: 3-4	A/A
	middle colours	CTL	grade	4-5	3-4	dry: 4, wet: 3	dry: > 4, wet: 3-4	A/A
	dark colours	CTL	grade	4	3-4	dry: 4, wet: 3	dry: > 4, wet: 3-4	B/A
Ignitability (cigarette test)	 BS 5852 part 1 (1979) from The Furniture and Furnishing (Fire) (Safety) regulations: 1988 No. 1324. Schedule 4 part 1 Ignition source 0: cigarette	CTL		passed				

Processing specifications

Minimum workable width in centimeters	± 138							
Roll length in meters	± 40							
Material weight in grams per linear meter	± 497							
Test	Test specification	Executed by laboratory:	Unit	Testresult		Norm RAL GZ 430/4:2019-01		Norm DIN EN 14 465:2006-09
				Warp	Weft	DGM	DGM+	
Tensile strength	DIN EN ISO 13934-1:2013-08	CTL	Newton	1.603	823	min. 350	min. 400	A/A
Tear growth resistance	DIN EN ISO 13937-3:2000-06	CTL	Newton	101,4	127,2	min. 25	min. 30	A/A
Resistance to seam slippage	DIN EN ISO 13936-2:2004-07. Load 180 N	CTL	mm	2,0	1,5	max. 5	max. 4	A/A
Delamination	DIN 53530:1981-02	CTL	Newton	21,3	20,6	n/a	n/a	n/a
Chemical substances	REACH	Centexbel		passed				
	Oeko-Tex, product class II	Centexbel		certified				

Cleaning specifications

Test	Test specification	Executed by laboratory:	Unit	Testresult		Norm RAL GZ 430/4:2019-01		Norm DIN EN 14 465:2006-09
				Warp	Weft	DGM	DGM+	
Dimensional change for washing 30 degrees celcius / air drying	DIN EN ISO 5077:2008-04, DIN EN ISO 6330:2013-02, DIN EN ISO 3759:2011-08	CTL	%	-0,4	0,0	n/a	n/a	A/A
     - We recommend to wash the cover inside out and immediately place the cover back to the piece of furniture, slightly damp, after washing.								

OEKO-TEX®
CERTIFIED IN TEXTILES



FABRAA®
fabrics with a conscience

Textaafoam b.v.
La Défense 11 | 5026 SC Tilburg
P.O. Box 12 | 5050 AA Goirle
The Netherlands

T +31(0)13 534 5934
F +31(0)13 534 7586
E info@fabraa.com
www.fabraa.com

Witteveen
Project-Inrichting.nl

Witteveen Projectinrichting
Ouderkerk a/d Amstel
Tel: 020 - 496 5030
info@witteveen.nl
www.ergo-burostoel.nl
www.project-inrichting.nl

nov 2022