

softwall use guide



molo design, ltd.
1470 venables street
vancouver, bc
canada V5L 2G7

t + 1 604 685 0340
info@molodesign.com

www.molodesign.com
instagram-studio_molo
pinterest-molostudio



The following installation tips are complementary to the printed use guide included in your shipment.

As part of our service, we kindly request that you share pictures of the space once your softwall setup is complete. Reviewing the installation allows us to provide further guidance if required.

orientation of wall

softwall's rounded bottom edge minimizes the effects of wear over time, as well as bringing visual lightness to the way it meets the floor. Ensure your softwall is oriented to have this rounded edge at its base, and that the floor is flat, clean and dry.



carrying softwall

The best way to carry softwall is to grasp a hole on each end panel, with the compressed depth of the wall oriented vertically. In this way, the softwall becomes like a structural beam, and will not flop open or sag as you transport it.



carrying softwall

If a softwall is 1.83 meters (6 feet) tall or smaller it can easily be carried by a single person.



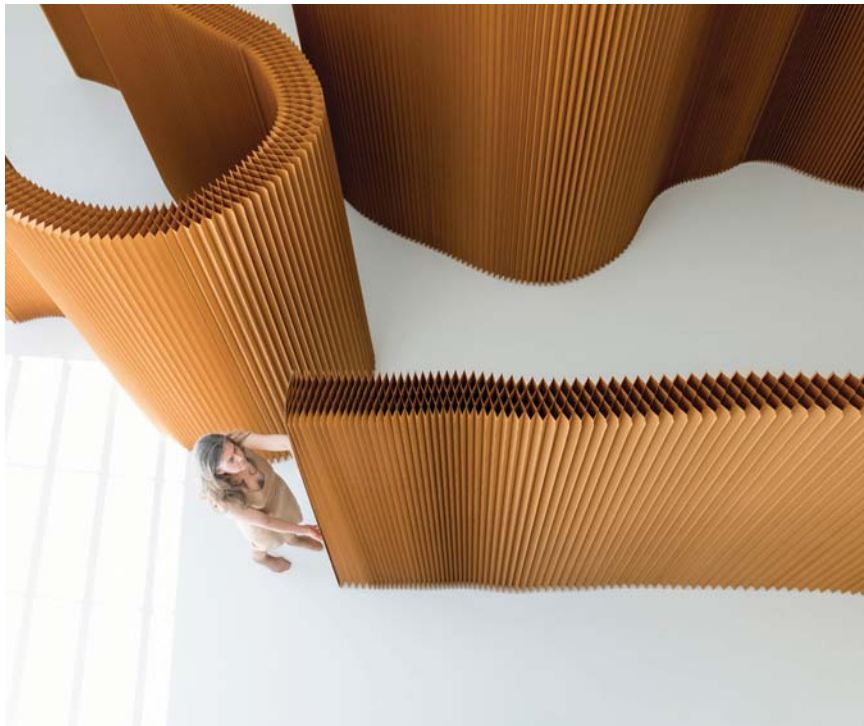
stretching softwall

All standard length softwalls extend to 4.5 meters (15 feet) when fully expanded. With one person at each end, grip the tunnels just above and below the centermost hole and, slightly lifting the leading edges of the softwall off the floor, walk apart in a straight line until the wall is stretched as far as it can go, around 9 meters (30 feet).



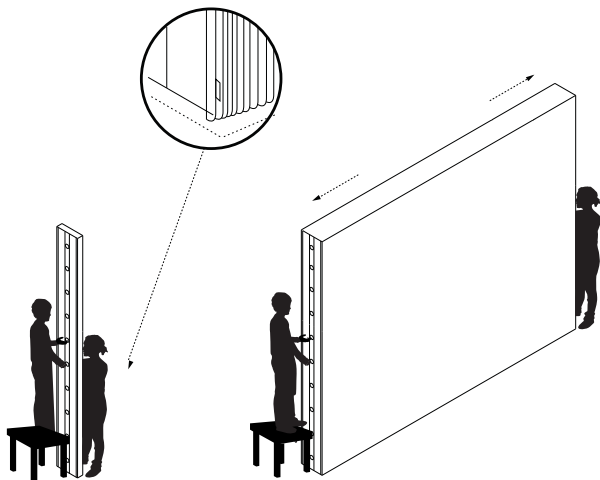
stretching softwall

With softwall fully expanded, you will feel a little tension in the wall as it gets a good stretch. Hold for 30 seconds before walking the wall in to release tension. paper softwall is especially stiff upon first opening and may require more than one stretch to ease the cells open to a natural extension.



stretching 3 meter tall softwall

3 meter (10 feet) tall softwall should be opened by two people. It is easier to open softwall if person 1 stands on a raised surface with a firm hold on the circular holes in the end panel.



With person 1 stationary and firmly holding softwall, person 2 begins to pull open softwall, first expanding the columns of honeycomb cells nearest the end panel and then continuing with each adjacent layer. While opening, lift lower end of softwall 3 centimeters (1 inch) off the floor, rather than dragging it. Once the first 20-30 layers have expanded, continue opening softwall to its full length. Hold softwall in this expanded position for a few minutes to stretch

softwall may flop over the head of person 2 while opening. If this happens, simply continue to open the wall and it will pull itself up.

softwall's magnetic end panels

Magnets are concealed in each of softwall's end panels. The end panels must be folded closed to give a freestanding softwall stability. The end panels are particularly stiff upon first use; starting from one point, run your hands along the height to guide the meeting of the magnets and to reinforce the fold.



softwall's magnetic end panels

The magnetic end panels can also be used to connect softwalls to each other.



softwall accessories

For ease of handling, optional wool felt handles may attach to paper or textile softwalls that are opened and closed frequently. Each set includes a template and instructions for placement.

The magnetic end panels of softwall can connect to solid walls or cabinetry by using molo's steel anchor strip or other ferrous steel surfaces.



compressing softwall with anchor strip

When compressing softwall with anchor strip, keep softwall extended at least 61 centimetres (2 feet) for stability. Curling one end of the softwall towards the anchored side will offer additional stability.



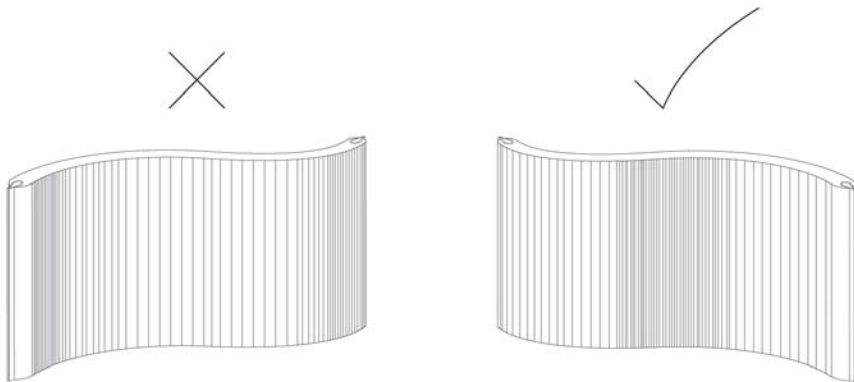
arranging softwall

To rearrange the position or shape of the softwall, hold the fins between your knuckles, lift a little and pull into place. Pulling softwall is better than pushing, as pushing may cause instability or crush and soften the fins on the bottom of the wall.



arranging softwall

If the full extension of softwall is not required, maintain a tighter compression of the layers towards the centre of the wall, allowing the layers located within at least 0.75 meters (2.5 feet) from each end to be fully expanded.



storing softwall

Sweeping softwall into a compact, freestanding column is a quick way to store it and keep it ready to redeploy. Alternately, a stainless steel hook from molo can be used to hang a compressed softwall from a solid wall or cabinet. The stainless hook can be used with softwalls up to 244 centimeters (8 feet) tall.



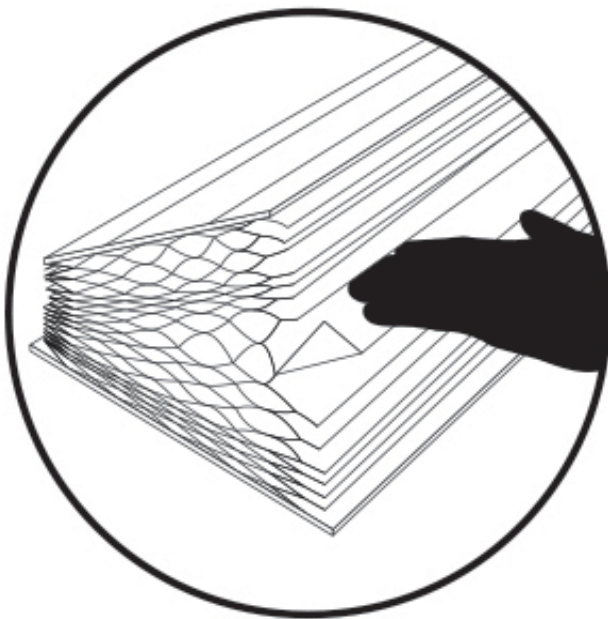
storing softwall

We recommend you keep the original packaging if you plan on storing the softwall for extended periods of time or are transporting walls between installations. When opening softwall packaging, do not cut any of the cardboard. Simply cut the plastic strapping and unfold.



storing softwall

Whether you are storing your softwall on your hook, in your packaging, or laid flat in a cool, dry place, first re-open the end panels and smooth out any layers that have become folded or crushed.



LED for white textile softwall

LED ribbons can be added to white textile softwall + softblock to transform the partitions into luminous dividers. These LED ribbons thread through the wall's interior tunnels. One ribbon is suitable for softwalls under 8 feet (244cm) tall. Two-way ribbons are available for taller softwalls.



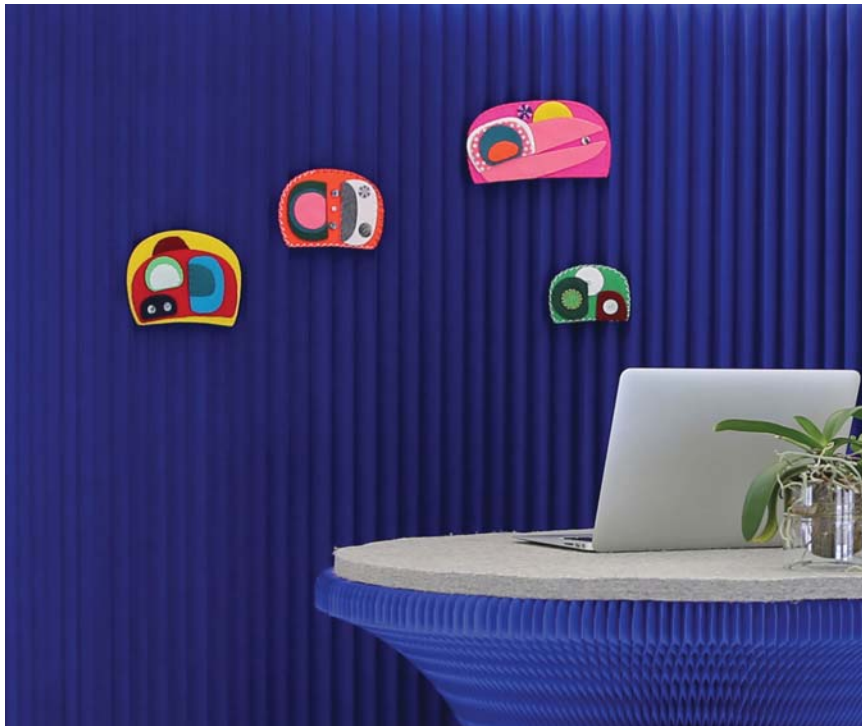
felt handle

for ease of handling, wool felt handles are an option for paper or textile softwalls that are opened and closed frequently. Each set contains two felt pieces that combine to create a grip for one end of softwall.



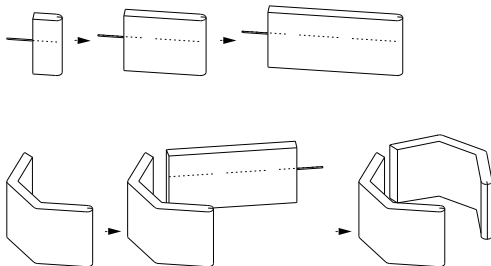
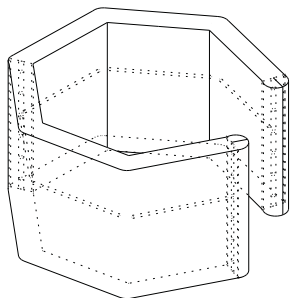
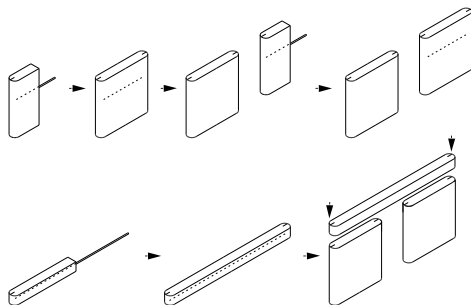
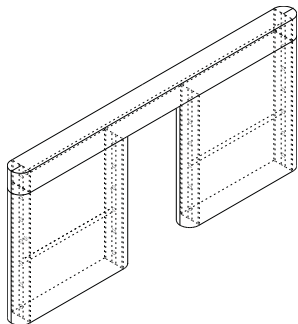
clipping system

Lightweight materials such as paper, textiles and foam board signs can be clipped to the vertical fins of softwall + softblock with steel clips and magnets. Thin powder-coated steel letters may also be fastened using the same method.



tube system for softwall

Tubes can be placed inside the circular tunnels that cut through the length of every softwall + softblock to create straight and angled arrangements. A softblock reinforced with tubes can act as a lintel to span windows.



care + maintenance

- textile softwall + softblock are water-, tear- and UV-resistant (will not discolour in sunlight) and antistatic to repel dust.
- kraft paper softwall + softblock are not suitable for wet or humid environments.
- Baby wipes work well for cleaning textile softwall + softblock (or any nonabrasive cloth + water). If there is a stubborn stain on textile softwall try “Mr. Clean magic eraser”. Use with care as they can abrade the textile.
- Compressing and then expanding softwall + softblock will push air through the cells, blowing out dust that has collected inside.
- softwall + softblock will benefit from periodically being closed and left in a compressed state for a few days in order to regain shape memory.
- Clean optional wool felt handles with a lint brush or damp cloth.
- It is possible to repair small tears in softwall. Ask for details.
- softwall + softblock are intended to have a long, useful life. Nevertheless, they are made with material that is 100% recyclable (just remove magnetic end panels). The paper used for brown and blue softwall + softblock is made from wood harvested from FSC® Certified (FSC® C158591) responsible sources. textile softwall + softblock is 100% polyethylene and is ♻ in the recycling stream.



We invite you to contact us at any time with questions that may arise during the installation or through your continued explorations with softwall.

molo products are designed by Stephanie Forsythe and Todd MacAllen, manufactured by Molo Design, Ltd. and protected by patents and/or design registrations viewable at molodesign.com/ip.

Witteveen Projectinrichting
Ouderkerk a/d Amstel
Tel: 020 - 496 5030
info@witteveen.nl
www.scheidingswand.net
www.project-inrichting.nl